



Sparrow Group

Bangladesh



Profile

Bangladesh, India, Jordan



E s t d

1 9 6 5 in India

1 9 8 6 in Bangladesh

As a domestic apparel manufacturing company, Ambattur Fashion India Private Limited (AFIPL) pioneered ready to wear clothing for the Indian market.

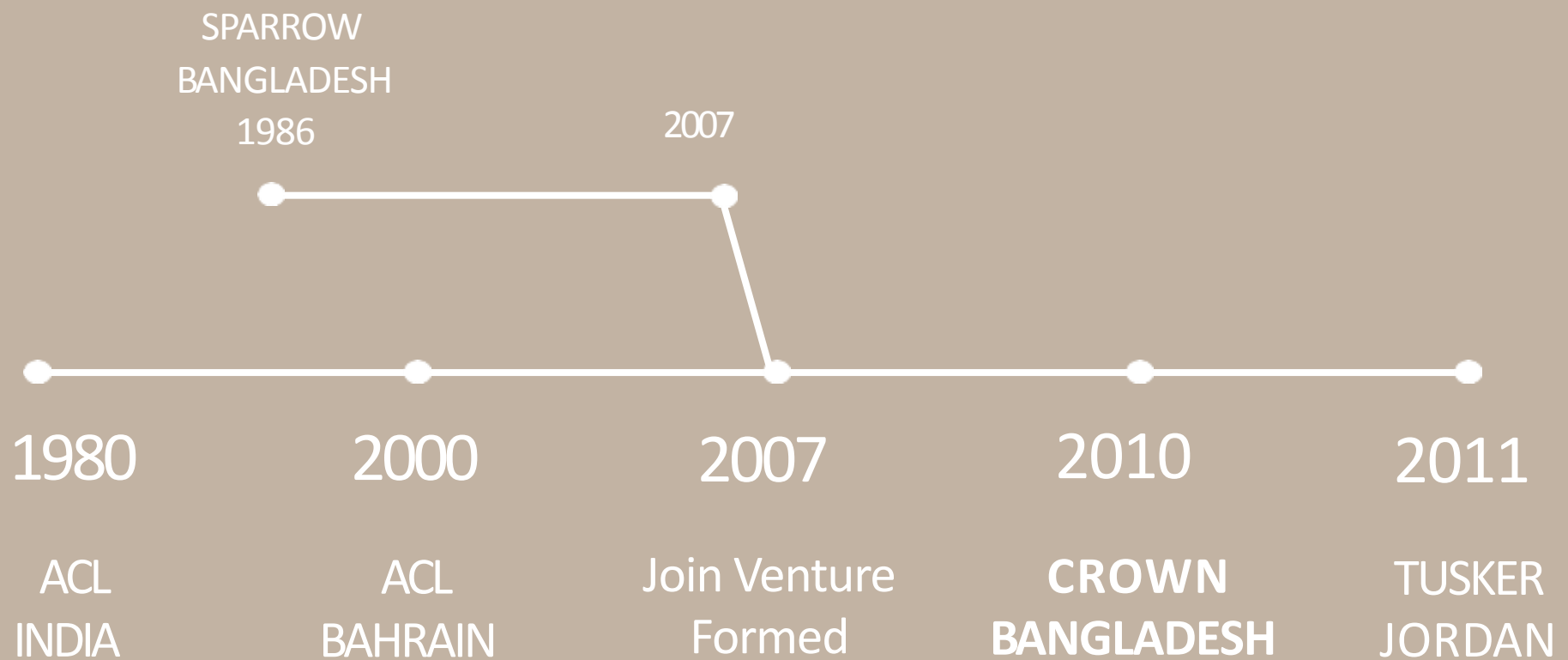
In 1980, AFIPL transitioned to the international stage, manufacturing for and exporting exclusively to French Connection, United Kingdom.

Today, AFIPL manufactures in three countries, with more than 20,000 associates.

A global strategic presence equips AFIPL with the benefits of scale, low cost, duty free and dexterity.

From a humble base of 2 lines to current total of 116 lines, today the group has a \$300 million turnover.

THE JOURNEY



Buyers



MARKS &
SPENCER

TALBOTS



ANN INC.

J. Jill

ANN TAYLOR | LOFT | LOU & GREY



OLD NAVY



ecru

MANGO

AMERICAN EAGLE
OUTFITTERS



E-Land

Facilities



Jordan

Tusker Apparels
Jordan
Bottoms 18 Lines
Jackets 1 Line
1300 Machines



India(HQ)

Ambattur Clothing
Chennai
Multi Lines 2, Bottoms 6 Lines &
Tops 6 Lines
1000 Machines



Bangladesh

Sparrow Apparels
Dhaka
Bottoms & Outerwear 28 Lines
1500 Machines



Crown wears
Dhaka
Bottoms 20 Lines, DWW 19 Lines &
Top 16 Lines
2700 Machines



CAPACITY (Million pcs / Year)

Location	Current
India	4.00
Bangladesh	27.00
Jordan	7.00
Total	38.00



Product Capability



- **Synthetic Woven Bottoms (Men's & Women's Refined Pants)**
- **Woven Casual Bottoms (Men's & Women's Pants)**
- **Ponte Pants & Dresses**
- **Blazers**

- **Embellished Tops / Dresses**
- **Woven Casual Bottoms**
- **Delicate Women's Wear (DWW)**
- **Casual Outerwear**
- **Woven Men's Shirts**

- **Woven Casual bottoms**
- **Denims & 5 Pkt pants (Laser & Ozone)**
- **Garment Dyed bottoms and tops**
- **Delicate Women's Wear (DWW)**
- **Casual Outerwear**
- **Woven Men's Shirts**

Cutting Edge Technology To Fashion

OPTITEX

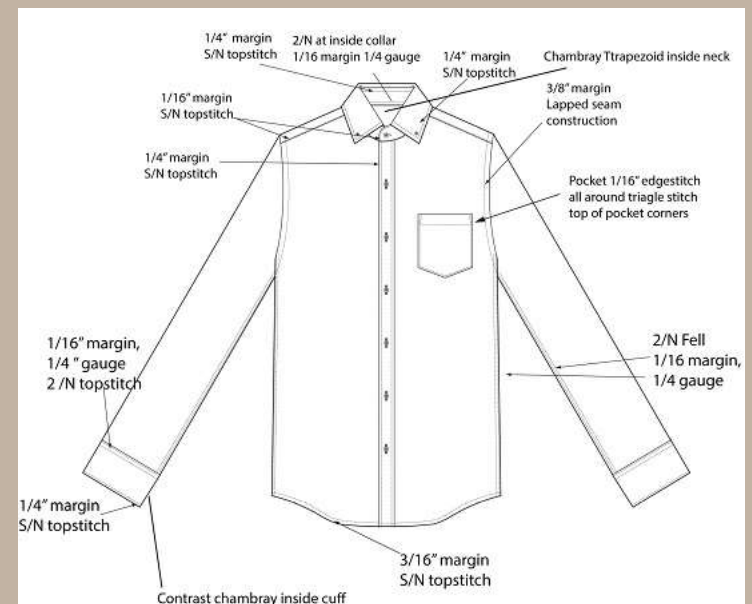
As fashion trends change and the pace to market quickens, company has tied up for 3D Technology to empower and stay on the leading edge of technology. This includes constant innovation, full lifecycle customer support, and a passionate belief that inspiration is everywhere — a passion to share and transforming the way fashion will be tomorrow.

3D Rendered Images

VIRTUAL RENDERING IMAGE



SKETCH



Production

Production process is supported with about 10,000 state of the art machineries, modern layouts, top class material handling systems and optimum care at needle point to meet quality and quantity requirements.



India



Sparrow Dhaka



Jordan



Crown Dhaka

Sparrow Machines

2000 Plus Automatic Machines with 700,000 pcs Bottoms and Outerwear Productions

SL NO.	DESCRIPTION	QTY	SL NO.	DESCRIPTION	QTY
1	AUTOMATIC THREAD TRIMMING ENERGY EFFICIENCY SINGIE NEEDLE	1066	17	FOA 2/ 3 NEEDILE	24
2	DITCH & STITCH [WAIST BAND] DA MACHINE	42	18	BUTTON HOLE ELECTRONIC MANUAL M/C	9
3	DLM EDGE CUTTER MACHINE	148	19	BUTTON RAPPING MACHINE	16
4	DOUBLE NEEDLE SPLIT BAR SINGLE BAR	134	20	3 NEEDLE FLAT LOOK	3
5	DOUBLE NEEDLE CHAIN STITCH	85	21	KANSAI WAIST BAND ATTACHPNG M/C	14
6	SHEDDLE / PICK STITCH MACHINE	7	22	BELT LOOP MAKING MACHINE[FLAT LOCK]	3
7	OVER LOOK [5+3] THREAD]MACHINE	179	23	BELT LOOP BLIND MAIER MACHINE	8
8	ELECTRONIC BARTACK MACHINE	81	24	SNAP FIXING MACHINE [NUMATIC]	45
9	BUTTON ATTACH MACHINE [LOCKSTITCH]	38	25	BUTTON PULLER TESTER	1
10	KEY HOLE/ EYE LET/ BUTTON HOLE M/C	18	26	DENNISION STAPLE MACHINE	10
11	WELT POCKET MACHINE [APW]	23	27	COLLAR TURNING MACHINE NS -81P	1
12	VELCRO ATTACTING MACHINE [AMS]	5	28	SLEEVE ATTACHING MACHINE	8
13	VELCRO CUTTING MACHINE	3	29	FUSING PRESS HEAT TRANSFER MACHINE	3
14	SERGING MACHINE	5	30	THREAD WINDER	3
15	ZIG ZAG MACHINE	6	31	BOTTOM HEMMING 3022BHE-C	2
16	BLIND HEM MACHINE	16	32	AUTOMATIC POCKET SETTER/ ATTACHING	3
				TOTAL	2009

Crown Machines

DWW-

1500 Machines and
165,000 SFT floor
area.

Specialized
operation M/C like:

- Single Needle
- Double Needle
- Kansai
- Chain Stitch
- Over lock
- Welt Pocket
- Flat Lock

TOPS-Shirt

1400 Machines and
135,000 SFT floor
area

Specialized
operation M/C like:

- Single Needle
- Double Needle
- Kansai
- Chain Stitch
- Over lock
- Welt Pocket
- Flat Lock

Bottoms-

2000 Machines and
180,000 SFT floor
area.

Specialized
operation M/C like:

- Single Needle
- Double Needle
- Over lock
- Feed of the arm
- Welt Pocket
- Blind Stitch

Wash

150 Machines and
110,000 SFT floor Area

100,000 PCS Washing,
Garment Dyes, Denim
and dry process Capacity

Specialized operation
M/C like:

- Front Loader
- Dryer
- Hydro
- Cleaning Hand Blast
- 3D Crinkle Laser M/C
- Acid Wash
- Conveyer Oven
- PP Spray
- Grinding M/C
- Ozone Wash
- E-Flow Wash

All Energy Efficient Automatic Machines with underbed Thread Trimmers

5500 Machines with 1.5 Million PCs of Multi Products Capabilities



Sparrow Cutting & Sampling

- ERP System is directly linked to world leading Line Production Plan Software “FastReact” which is linked with cutting plan software “Astor”
- Auto Pattern Cutter and Plotters linked with Garber CAD System
- Garber Auto Spreader and Cutters combined with Laser and manual cutting for checks and synthetics
- 100 Plus Sample Operators and Techs in Sampling and R&D

Cutting Capacity: 30,000 Pcs/Day



Crown Cutting & beyond

- ERP System is directly linked to world leading Line Production Plan Software “FastReact” which is linked with cutting plan software “Astor”
- Auto Pattern Cutter and Plotters linked with Garber CAD System
- Garber Auto Spreader and Cutters combined with Laser and manual cutting for checks and synthetics
- 200 Plus Sampling Operators and Technicians on Sampling Building

Cutting Capacity: 75000 Pcs/Day



Gerber Cutter, Gerber Spreading, Laser Cutting, Winda Flatbed Cutting, Winda Template Cutting, Fusing, Band Knife, Straight Knife, Cuff Turning, Collar Turning Etc.

DEHUMIDIFICATION OF RAW MATERIALS AND PACKED GOODS

ALL FACTORY UNITS

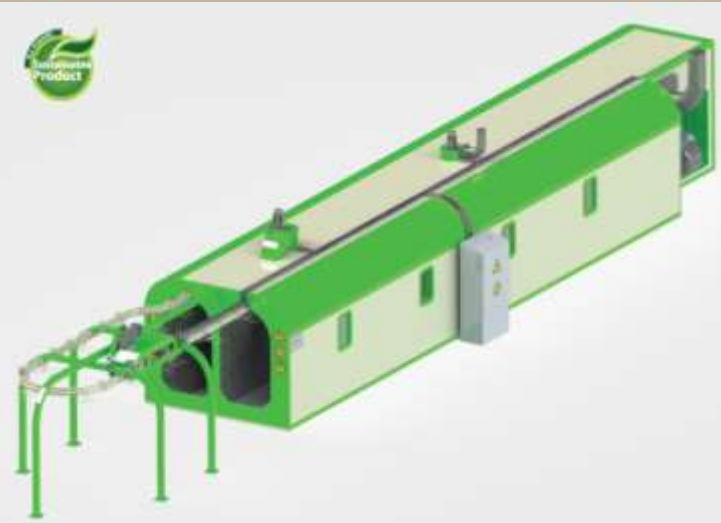


Laundry

The laundries at India and Bangladesh have a capacity of 275,000 pieces and 650,000 per month respectively with washes ranging from enzyme to various garment dye, Laser, Dry process and Denim washes. A new laundry with a floor area of 100,000 sq. ft is **operational in Dhaka** with a production capacity of **2.78 million** pieces per month.



State of the Art Eco Friendly Laundry



Automated Curing Oven



eFlow attached Dying/wash



Temperature control Precession Large Capacity dryers



Latest Ozone Machines



Jeanologia Flexi HS 3D laser with Continuous Marking



High Volume precession Hydro

Wash Capacity and Capabilities

- State-of-the art laundries
 - Crown: 100,000 pcs/day
 - Sparrow: 35,000 pcs/day
- Enzyme/Bleach/Snow Wash/Random Bleach/Tinting Color spray/PP spray/Snow Wash/Resin/Tinting
- Garment Dying: Reactive, Pigment, Reactive + Pigment, Double Dye
 - Sparrow 10,000 pcs + Crown 30,000 pcs
 - Many years of Experience in Garment dying for all the top buyers
- Denim
 - Crown: 15,000-20,000 pcs/day
 - Eco Wash, Ozone (Jenologia), Laser and eFlow
- Jenologia Flexi HS 3D laser with Continuous Marking Table, fully automatic head 3D
 - Fully Automatic robotic rotating Head 3D, Digital Auto focus and artificial Vision positioning
- Dip Dying:
 - Two large automated Dip Dying machine: 4000 to 5000 pcs per Day
- Dry Processing:
 - Curing Oven with Conveyer
 - Chemical Application cabinet with Conveyor
 - 3D Crinkle Machine with Vacuum
 - Automatic Horizontal Scrapping/Brushing Machine

Fashion and Trendy Washes.....



Garment Dying of Regular and High Stretch



Acid Wash



Dip Bleaching



Random Jell Bleaching



Random Bleaching



Dip Dye



Cold Pigment Dye



Blocker Tie Dye



Acidual Dye with Splatter



Double Dye & NanoTex Chino

Different Laser Related Work plus Ozone



Laser Print, Artwork, Images & Sustainable Washes

Laser Rip & Repair



Bleach-down with Ozone

Different Resin Treated Garments & 3D



3D Effects



Simple 3D with Vacuum

Corporate Social Responsibility

As a part of our regular Corporate Social Responsibility activities, we include welfare centers; safe and hygienic employee working environment; training and development programs; health care and sanitation aid and training; secured transportation facilities; environmental awareness and cleanliness. We are committed to CSR programs with our clients, such as Marks & Start, HER, P.A.C.E., HALLOW, GEAR and others

Better Work – in collaboration with United Nation's ILO & World Bank's IFC, strives to improve working conditions and respect labour rights of workers.

HER - initiated by ANN INC, emphasizes the importance of women's health and finances

P.A.C.E – by GAP INC, Personal Advancement and Career Enhancement program for women

Mothers @ Work Project with Better Work, ILO and UNICEF

Corporate Social Responsibility



Outstanding achievement in Bangladesh



Alliance & Accord Update

❑ Alliance 100% Remediation Completed

Sparrow and Crown

❑ Accord Remediation Status

Sparrow: 100% Completed

Crown

Structural – 100% Complete

Electrical – 100% Complete

Fire – 100% Complete

Testing Commissioning Pending only due to Accord
Reorganization

CSR Initiatives



HEALTH CARE

- In-house Doctor's, Nurses & Hospital
- Trained matron for specialized care
Periodic Health and Eye Checkups Medical Assistance
- Emergency medical expenses for the family

LIFESTYLE AND WORKPLACE IMPROVEMENT

Top management is available to workers at all times to voice opinion and problem. They are addressed with immediate effect.

EMPLOYEE ENGAGEMENT

- Safety day and women's day celebration
- Trophies won in industrial zones regularly.
- All religious festivals are celebrated in the factories regularly.
- The Pongal festival is grandly celebrated with games, entertainment and food bazar.
- An annual carnival, which includes sports and games is also conducted for the employees.





Sustainability @ ACL





Sustainability Initiatives

- ▶ Eco
- ▶ Earth
- ▶ Energy
- ▶ Environment
- ▶ Excellence
- ▶ Efficient
- ▶ Eminent

Sustainable Future - your Styles are ready



WATER
Upto 60%
saving



ENERGY
Upto 10%
saving



CHEMICALS
Upto 10%
saving



WASTE
Reduce
Reuse
Recycle



Sustainable Raw Materials

- ▶ BCI Cotton / Organic Cotton
- ▶ Recycled Polyesters (Repreve / Recron Green)
- ▶ Ecovera Viscose
- ▶ Tencel / Bamboo / Hemp
- ▶ Recycled water for processing
- ▶ ZDHC Chemicals for dyeing

Sustainability Initiatives @ Factory

- ▶ HIGG Index, a global standard by Sustainable Apparels Coalition (SAC):
 - ▶ Water
 - ▶ Energy
 - ▶ Chemicals
 - ▶ Waste Management
 - ▶ Waste water
 - ▶ Air Emission
 - ▶ EMS

Water Consumption

Overall factory Water consumption		
Year	Average Ltrs per gmt	Cumulative Saving %
2017	33	
2018	31	6 %
2019	28	15 %
2020 (goal)	25	24 %

- ▶ **eWash** - water saving upto 35%
 - ▶ Indigenously developed sustainable wash methods with eco-chemicals and wash techniques across all core products that reduced water consumption when compared to conventional wash methods.
- ▶ **ePlus Wash** - water saving up to 60% - Innovations and partnership
 - ▶ Investing in innovative spray technologies like Jeanologia e-flow to increase water saving up to 60% compared to conventional wash methods.
 - ▶ R&D making great progress working jointly with Fabric mills, Machine Manufacturer and Brands : expected implementation in 2020.

Water Consumption - Piece dyed Chinos

Year	Average ltrs per gmt	Cumulative Saving %
2017	24	
2018	24	0 %
2019	24	0 %
2019 Dec (ready)	15 (eWash)	37 %
2020 June (goal)	11 (ePlus wash)	60 %

- ▶ The water saving % shown above is based on Cotton Stretch Chinos
- ▶ Sustainably washed Chino have a 30% - 40% water saving.
- ▶ As a future endeavour, using innovative spray technologies from Jeanologia for the **ePlus wash** process,
 - ▶ Saves an additional 25% water - Resulting in a total of 60% water saving compared to the conventional Enzyme wash.

Energy Saving

Overall Factory Energy consumption						
Year	Average Electricity Kwh per gmt	Cumulative Saving %	Average Natural Gas m3 per gmt	Cumulative Saving %	Average Diesel Ltrs per gmt	Cumulative Saving %
2017	0.684		0.320		0.028	
2018	0.659	3.6 %	0.293	8 %	0.024	14 %
2019	0.646	5.5 %	0.278	13 %	0.023	18 %
2020 (goal)	0.633	7.4 %	0.264	18 %	0.021	22 %

► Laundry

- With improved Washing Technique, innovation in Chemical Engineering Concepts & eco-chemicals, the sustainable wash process requires less running time and less steam resulting in energy saving
- Increased use of Natural Gas and CNG
- Eliminate Steam losses

► Shop floor

- 100% Servo motors for all sewing machines
- Energy efficient industrial exhaust fans
- Target to convert all remaining 50% of T5 (Tube light) into T8 (LED) in a phased manner to complete by June 2020

Energy Saving



Biomass Boiler



LED in Sewing section



Servo Motors



Solar Panels



Needle Point LED

Chemical Saving

- ▶ Consumption reduction upto 10% by Dec 2020
- ▶ Use of Eco chemicals like
 - ▶ Garmon Gepower NPS & ATB 710
 - ▶ Garmon Elam RP & Elam sens
 - ▶ Mistozyme LX3
 - ▶ Clearsil ROT & Saysoft SLC
 - ▶ Care Guard FF
- ▶ 80% ZDHC Chemicals by 2022
- ▶ Substituted Sandblasting and several dry process work with Laser

Waste Management Initiatives

- ▶ Replacing Poly bag usage across the facility with cloth bags (except buyer mandate items)



Trim issue to lines

Waste Management Initiatives

- ▶ Eliminate single use PET bottles in the facility
- ▶ Works with raw material suppliers to eliminate non-reusable packaging materials by 2020
- ▶ 10% reduction in waste across the facility by 2022 compared to 2018 values in Metal, Paper, Plastic, Food, Chemical drums, Batteries, e-waste etc.,
- ▶ Increase waste recycling & send 0% waste to landfill by 2022.
- ▶ Heighten the awareness across the board on Sustainable practices - Reduce, Reuse, Recycle.



Waste water Management

- ▶ 80% of Effluent water to be reused for Production, Flushing, Gardening, Car wash etc., by Dec 2022
- ▶ Wastewater testing & Disclosure to gateway as per ZDHC Guideline by 2020.
- ▶ Adopt Clean chain / BVE3 which is ZDHC Approved incoming tool by 2020.

Air Emission

- ▶ 20% reduction in Green House Gases by Dec 2022 through control of Generator & Boiler emissions by installing air quality control device

EMS

- ▶ Environmental Management System is a framework that helps review, evaluate and improve environmental performance - Constant monitoring, public reporting of 3rd party audited results

Waste water Management



ETP



Landscaping

Tracking Mechanism for all Initiatives

- ▶ HIGG INDEX, Sustainable Apparel Coalition (SAC) initiative
- ▶ The HIGG Index is a suite of tools/Framework that enables brands, retailers, and facilities of all sizes—at every stage in their sustainability journey—to measure social and environmental sustainability performance.
- ▶ Higg Index is the leading tool for standardized supply chain sustainability assessment.
- ▶ Each Impact Area is Comprised of Three Levels
 - ▶ Level 1 - Awareness and understanding of sources and systems
 - ▶ Level 2 - Setting baselines, targets, and tracking improvements
 - ▶ Level 3 - Leading aspirational practices
- ▶ Self or 3rd Party Audited and Certified:
 - ▶ All ACL facilities are 3rd Party Audited

HIGG Verified Scores & Goals

HIGG VFEM Score	EMS	Energy	Air Emission	Water	Waste water	Waste	Chemical Management	Total Score
2018 VFEM Score	83.3	80	22.5	100	66.67	21.43	78.54	64.64
2018 Level	1,2	1	1	1,2,3	1,2	0	1,2	
2019 (in progress)	1,2,3	1,2	1	1,2,3	1,2	1	1,2	Submitted for 2019
2020 (goal)	1,2,3	1,2	1,2	1,2,3	1,2,3	1	1,2,3	
2021 (goal)	1,2,3	1,2,3	1,2	1,2,3	1,2,3	1,2	1,2,3	
2022 (goal)	1,2,3	1,2,3	1,2,3	1,2,3	1,2,3	1,2,3	1,2,3	



GOTS, GRS & BEPI Certificates



CMA

Site Name: Crown Vitamins (Pvt.) Ltd.
 Address: Jamindia, Masterbari, Bhajuka, Not Applicable Mymensingh, Bangladesh

Request a follow-up chemical management audit Download as excel

Submitted on Mon Dec 25 2019 22:12:34 GMT+0600 (Bangladesh Standard Time) by Mohammed Elias

Approved on Fri Jan 10 2020 13:42:23 GMT+0600 (Bangladesh Standard Time) by Eduardo Melo

82% - good performance

CHEMICAL MANAGEMENT	PERMITS	EMISSIONS	HEALTH & SAFETY	Total
82 % (64.75/79)	92 % (6.25/7)	83 % (19/23)	85 % (15.25/18)	85 %

AUDIT INFORMATION

- Name of Auditing Company: Bureau Veritas CPS
- Name of Lead Auditor: Mohammed Elias
- Email of Lead Auditor: md.elias@bureauveritas.com
- umbri BEPI ID of Lead Auditor: CA03060120300

European Flax - under process*

Branding and Logo for Sustainability

- ▶ Currently developed branding and logo for the innovative sustainable wash with Eland of South Korea
- ▶ Similar opportunities are being explored with other Brands

**ECO INNOVATION
WASHING**

SAVINGS UP TO

 95-45% Water	 90-60% Chemicals	 40-20% Electric
--	---	---

이 제품은 친환경 워싱 공정으로
Nano Bubble Tech을 이용해
최소의 물과 화학약품을 사용하여
만들어졌습니다.

SPA O

Video & Files

**Design Hub &
Washhouse**

**Innovative
Washes**

**T25 Product
Presentation**

Future Trek

Modern Luxe

Sundown

Modern Sartorial

Oceanic

By Invite only

Thanks

